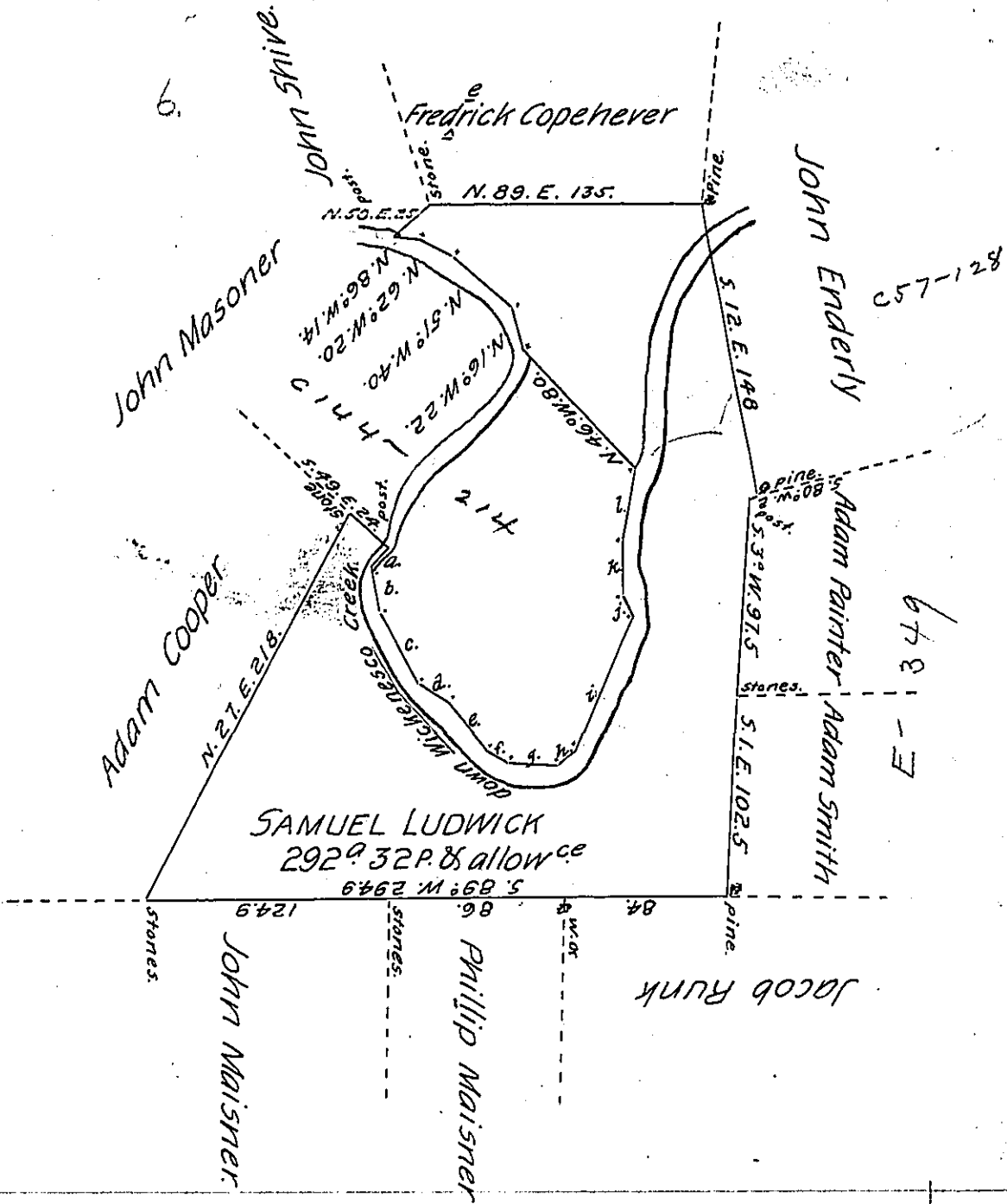


- a-5.39° W. 10.
- b-5.9 E. 24.
- c-5.32 E. 42.
- d-5.59 E. 16.
- e-5.40 E. 34.
- f-5.60 E. 10.
- g-5.87 E. 26.
- h-N.44 E. 10.
- i-N.22 E. 72
- j-N.23° W. 12.
- k-North 26
- l-N 8 E. 38.



Surveyed for Samuel Ludwick on the 5<sup>th</sup> day of December 1810, by Virtue of A Warrant Granted to Andrew Reig<sup>e</sup>ll & Jacob Metz, dated the 26<sup>th</sup> of April 1775, The Above described Tract of Land Containing two hundred and Ninety two Acres, thirty two perches & the Allowance of six p. ct Situate in Upper Paxtang Township, Dauphin County.

John McKee, D. S.

Andrew Porter, Esq<sup>r</sup> }  
 Surveyor General.

IN TESTIMONY that the above is a copy of the original remaining on file in the Department of Internal Affairs of Pennsylvania, made conformably to an Act of Assembly approved the 16th day of February, 1833, I have hereunto set my Hand and caused the Seal of said Department to be affixed at Harrisburg, this twenty-seventh day of August 1906.

*Isaac R. Brown*  
 Secretary of Internal Affairs.